

INSTALLATION, MAINTENANCE and USER`S MANUAL THD, THDC, THX and THXC.

Before starting the installation, read the entire Installation
Instruction carefully!!!

1 INSPECT THE INSTALLATION KIT!

The installation kit includes:

- ✚ 6 pcs Clamps (Fig. 1)
- ✚ 1 pc Protective tape for truck bed 1,4 m
- ✚ 2 pcs Front fitting (Fig. 2)
- ✚ 2 pcs Tapping screw 6,3*19
- ✚ 2 pcs Screw M6S M5*12
- ✚ 2 pcs Washer M5



Fig. 1



Fig. 2

2 START INSTALLING THE HARDTOP ONTO THE TRUCK BED.

First clean the truck bed frame, open hardtop back hatch and lift the hardtop carefully onto the cargo bed (Fig. 3) and pull it backwards until its lower flange goes against the front of the load bin.



Fig. 3

Installing the hardtop for cars with frame (Fig. 4)



Fig. 4



Fig. 5

It is recommended to cover marked areas on the car cabin (Fig. 5) before installing the hardtop in order to avoid paint damages that may occur when installing the hardtop.

Start installing the hardtop to car with frame. First clean the truck bed frame, open hardtop back hatch and lift the hardtop front edge carefully between the car and frame. Lift the hardtop back part slightly upper than the front part (Fig. 6) and lift the hardtop carefully onto the cargo bed and pull it backwards until its lower flange goes against the front of the load bin.



Fig. 6

3 ATTACH THE HARDTOP TO TRUCK BED

Center the hardtop sideways on the load bin and place the clamps acc. to the image. (Fig. 7)



Fig. 8

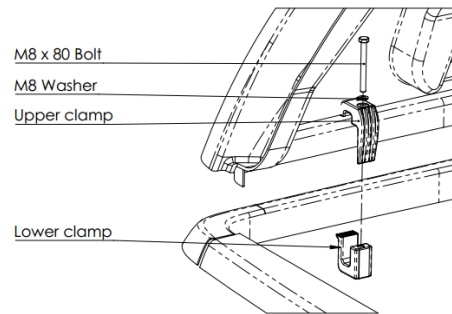


Fig. 7

Pull the cover towards the edge of the bin with 6 clamps (Fig. 8)

NOTE! Tension force Max. 10 Nm or 1kg/m



Fig. 9

If over rail plastic bed liner (Fig. 9) is used it is necessary to drill holes for the clamps.

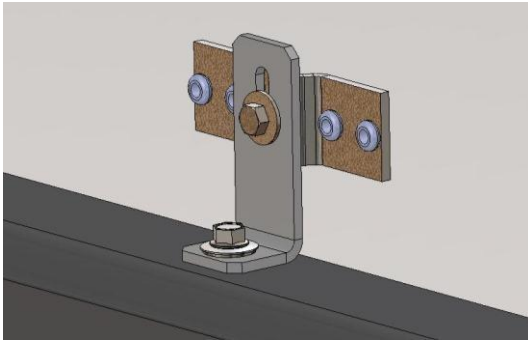
NB!!! For cars with frame also fasten front mounts!

Fig. 10

Attach the front mounts acc. to the image (Fig. 10). Place the front mount towards the front side and screw it into the existing cover fitting. Using the front mount pull the front backwards and at the same time at mark the load bin's front side for the hole where the self-tapping screws will be drilled. Drill the hole 4,9 - 5,0 mm into the front and tighten the screw.

4 INSTALL PROTECTIVE TAPE ON THE CAR TAILGATE

Clean the car tailgate where the hardtop back hatch sealing touches the car tailgate (Fig. 11) and fasten protective tape to that part.

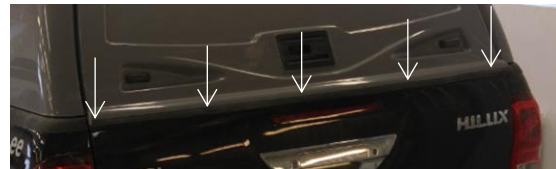


Fig. 11

5 ADJUSTING THE HATCHES

THDC, THXC -0055; -1155; -1133

Check that the doors close easily and that the lock is correctly adjusted, if necessary adjust the lock or locking strap. (Fig. 12)



Fig. 12

It is possible to adjust the length of the locking rods by loosening the plastic clip and turning the locking rod which is screwed into the joint against the locking hook. (Fig. 13)



Fig. 13

THD, THX -0055, -1155; -900; -1100

Check that the doors close easily and that the locks are correctly adjusted. If necessary, the height of the glide angle can be adjusted (Fig. 14)



Fig. 14

6 INSTALLING RAILINGS OR ROOF RACKS

Install railings or roof racks on to the roof of hardtop flat surface (Fig. 15) according to the railing or roof rack layout drawings.

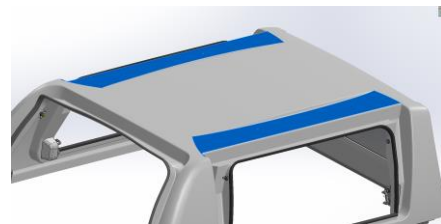


Fig. 15

To fasten railings (Fig. 16) or roof racks (Fig. 17) drill holes and fasten according to drawings.

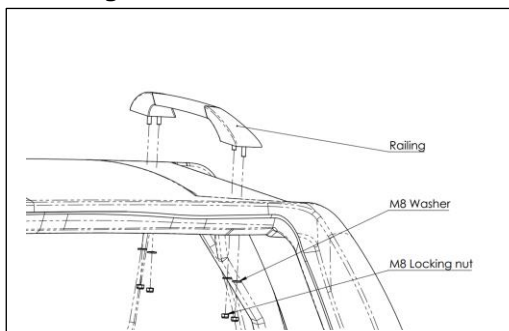


Fig. 16

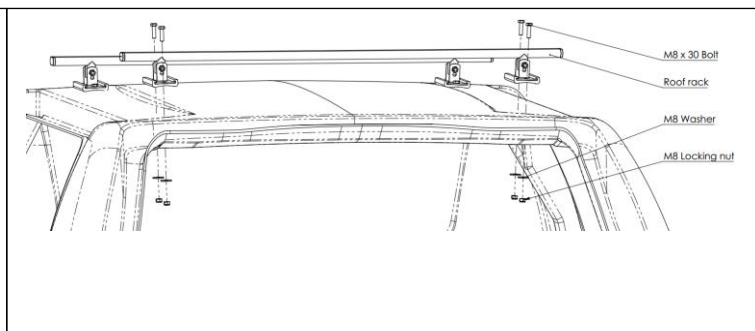


Fig. 17

NB!!! It is not allowed to step on to the roof!

7 MAINTENANCE

- ✚ To ensure that the door lock system's moving parts function correctly, lock systems should be lubricated at least twice per year. Under difficult conditions such as a dusty environment, then every month is recommended
- ✚ Our recommendation is to wax the hardtop with gel coat surface when new, mounted on the vehicle, and then annually to avoid discoloration. Read more: "Maintenance instructions for a hardtop with gel coat surface".
- ✚ A pressure washer can be used to wash the inside of the hardtop.
NB!!! Beware of electrical appendices!

NB!!! After driving for approximately 6-8 months all connections should be checked and re-tightened, if necessary!!!