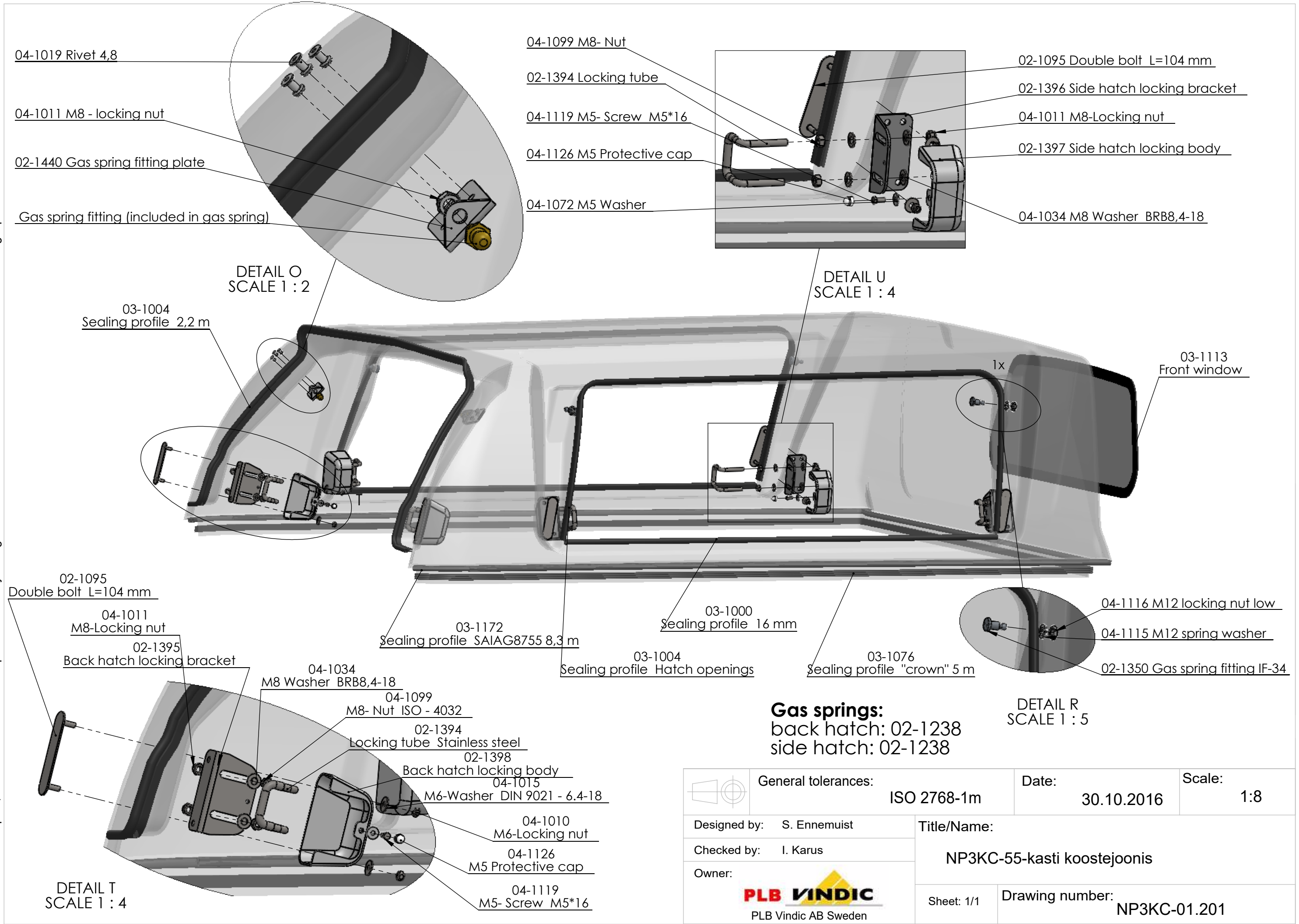




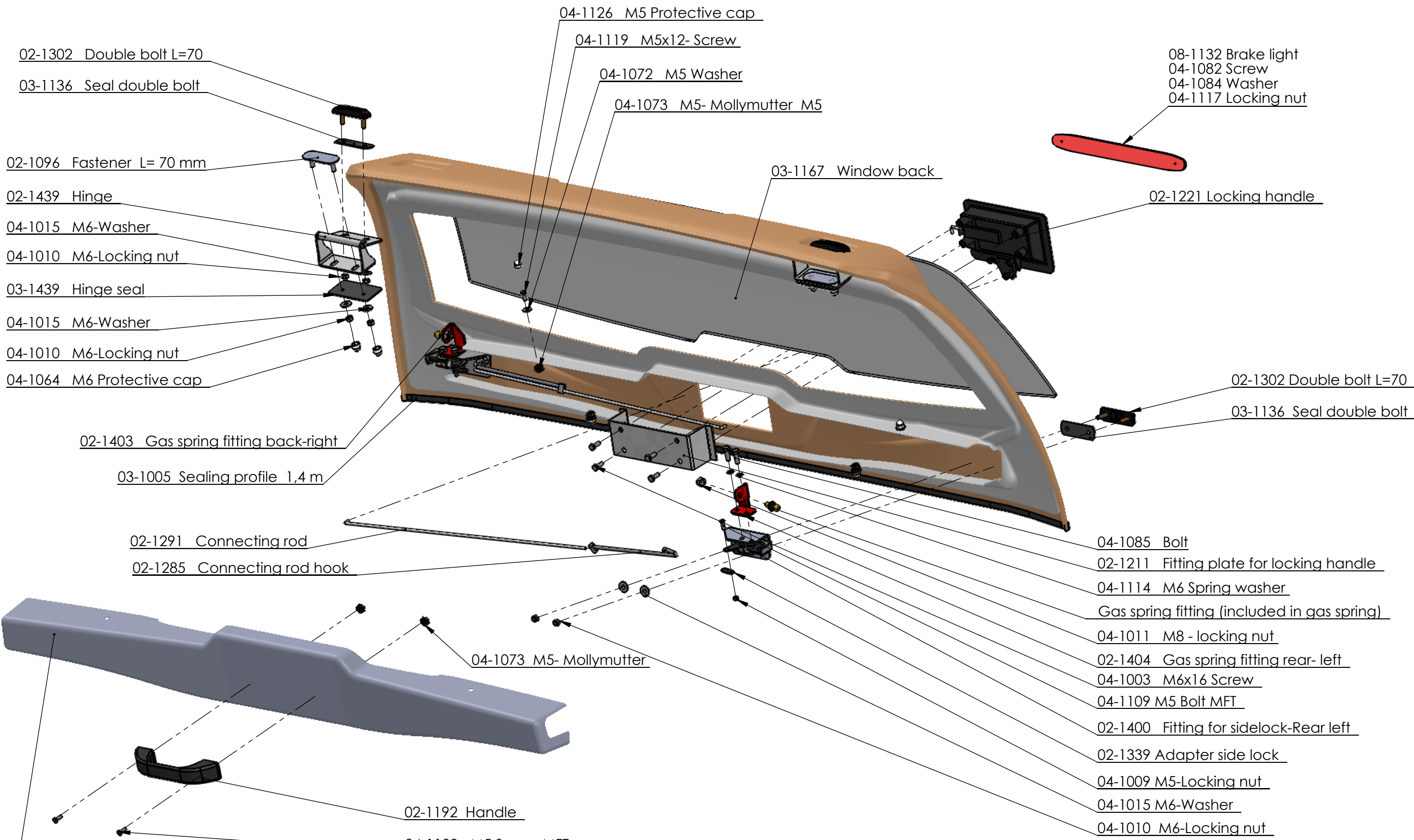
This drawing is the property of PLB Vindic AB. It is strictly confidential and must not be copied, traced or loaned without permission. Any infringement of these conditions will lead to the institution of legal procedures



Gas springs:
 back hatch: 02-1238
 side hatch: 02-1238

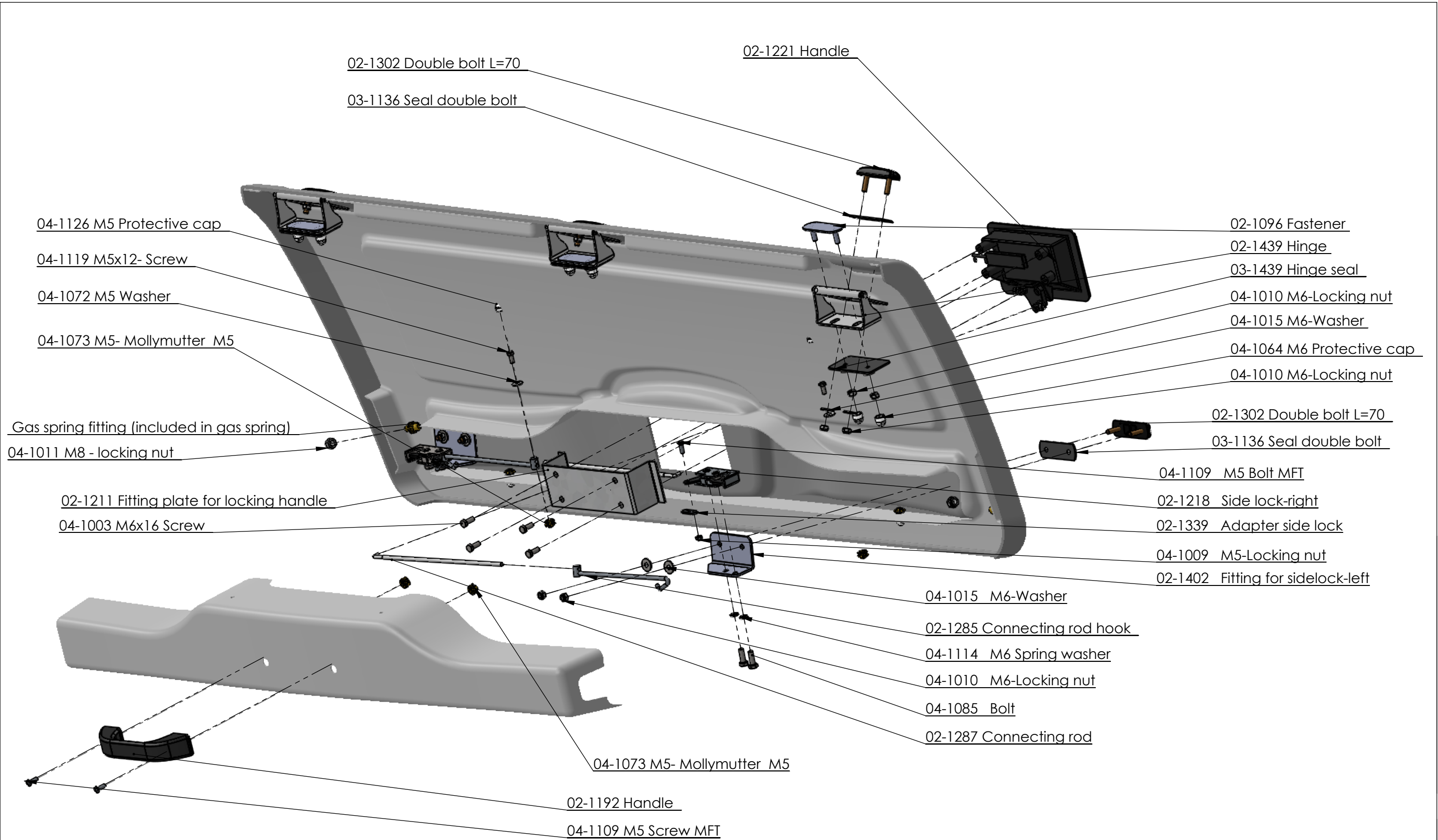
	General tolerances:	ISO 2768-1m	Date:	30.10.2016	Scale:	1:8
	Designed by:	S. Ennemuist	Title/Name:			
Checked by:	I. Karus	NP3KC-55-kasti koostejoonis				
Owner:	 PLB Vindic AB Sweden	Sheet: 1/1	Drawing number:			NP3KC-01.201

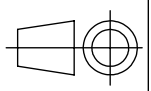

This drawing is the property of PLB Vindic AB. It is strictly confidential and must not be copied, traced or loaned without permission. Any infringement of these conditions will lead to the institution of legal procedures



	General tolerances: ISO 2768-1m	Date: 28.02.2017	Scale: 1:6
	Designed by: S. Ennemuist Checked by: I. Karus Owner: PLB VINDIC PLB Vindic AB Sweden	Title/Name: NP3DC-55, NP3DC-1133, NP3KC-55 and NP3KC-1133 back hatch assembly drawing	
Sheet: 1/1		Drawing number: NP3DC-03.201	

This drawing is the property of PLB Vindic AB. It is strictly confidential and must not be copied, traced or loaned without permission. Any infringement of these conditions will lead to the institution of legal procedures



	General tolerances:	ISO 2768-1m	Date:	5.01.2017	Scale:	1:5
	Designed by:	S. Ennemuist	Title/Name:			
Checked by:	I. Karus	NP3KC-55 side hatch assembly drawing				
Owner:	 PLB Vindic AB Sweden		Sheet: 1/1	Drawing number:		NP3KC-02.201