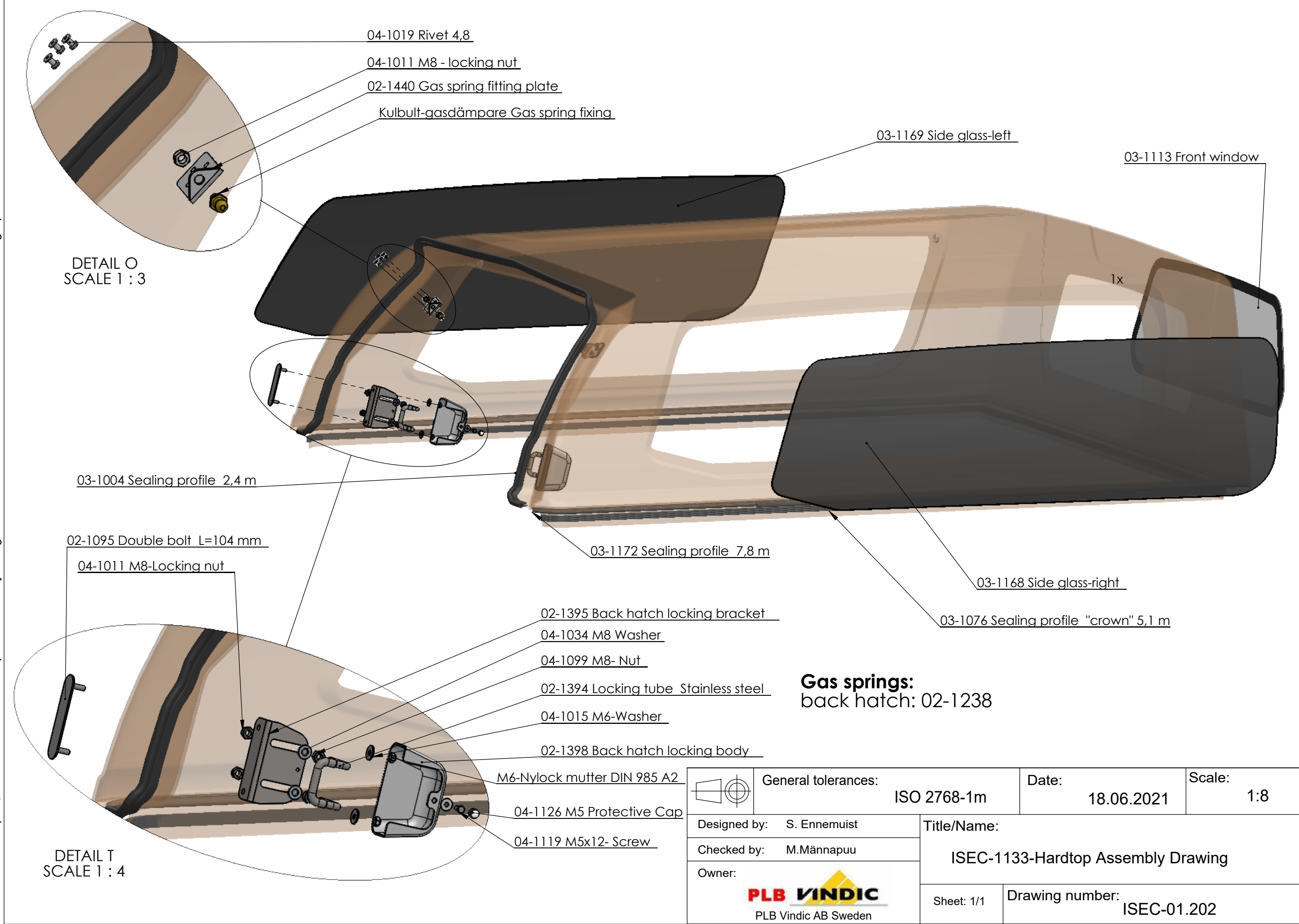


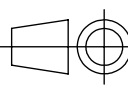

This drawing is the property of PLB Vindic AB. It is strictly confidential and must not be copied, traced or loaned without permission. Any infringement of these conditions will lead to the institution of legal procedures



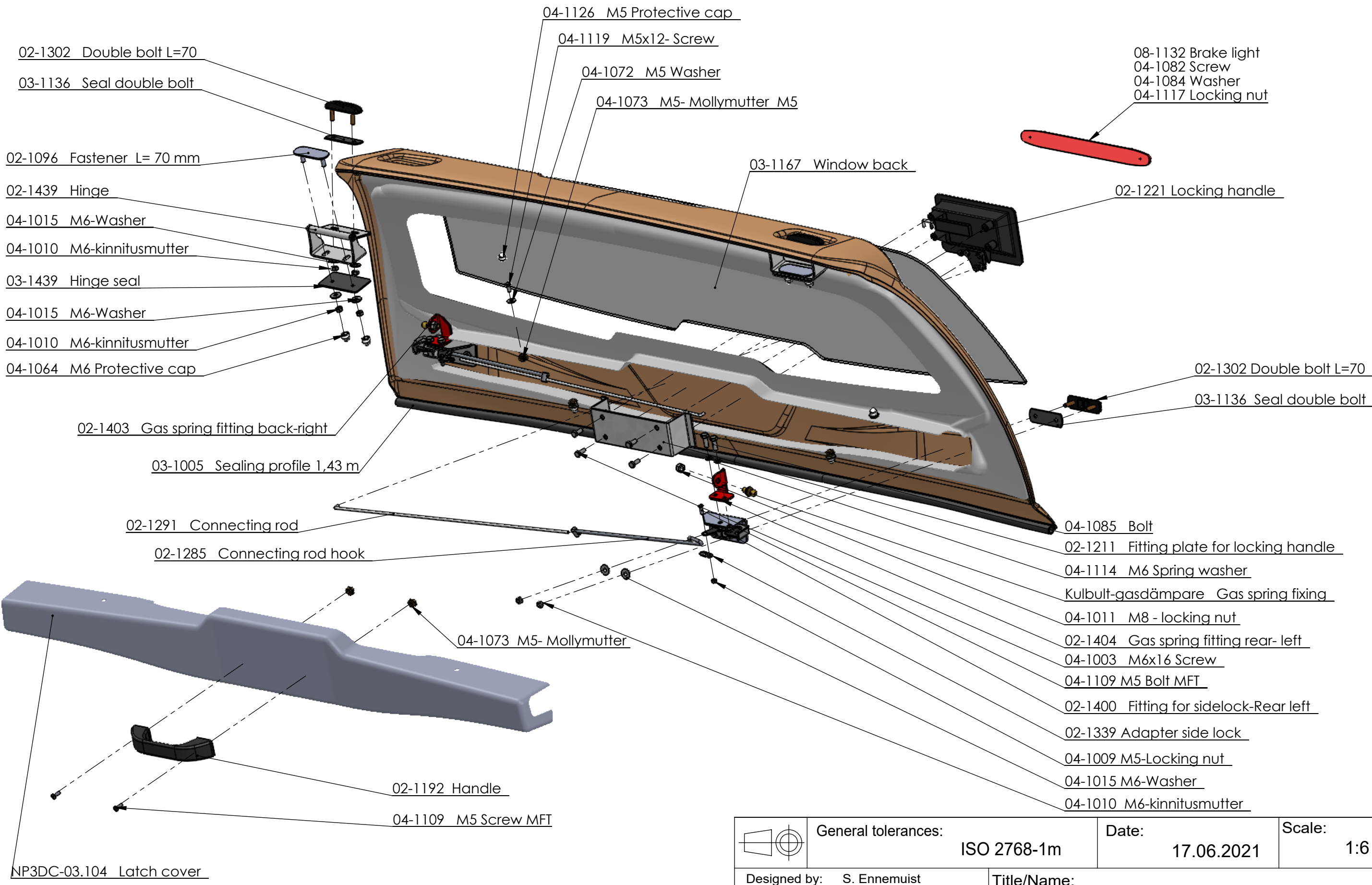
DETAIL O
SCALE 1 : 3

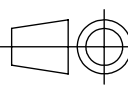

DETAIL T
SCALE 1 : 4

Gas springs:
back hatch: 02-1238

	General tolerances:	ISO 2768-1m	Date:	18.06.2021	Scale:	1:8
	Designed by:	S. Ennemuist		Title/Name:		
Checked by:	M.Männapuu		ISEC-1133-Hardtop Assembly Drawing			
Owner:	 PLB Vindic AB Sweden		Sheet: 1/1	Drawing number:		
			ISEC-01.202			

This drawing is the property of PLB Vindic AB. It is strictly confidential and must not be copied, traced or loaned without permission. Any infringement of these conditions will lead to the institution of legal procedures



	General tolerances:	ISO 2768-1m	Date:	17.06.2021	Scale:	1:6
	Designed by:	S. Ennemuist	Title/Name:			
Checked by:	M.Männapu	ISDC-55, ISDC-1133, ISEC-55 and ISEC-1133 back hatch assembly drawing				
Owner:	 PLB Vindic AB Sweden		Sheet: 1/1	Drawing number:		ISDC-03.201