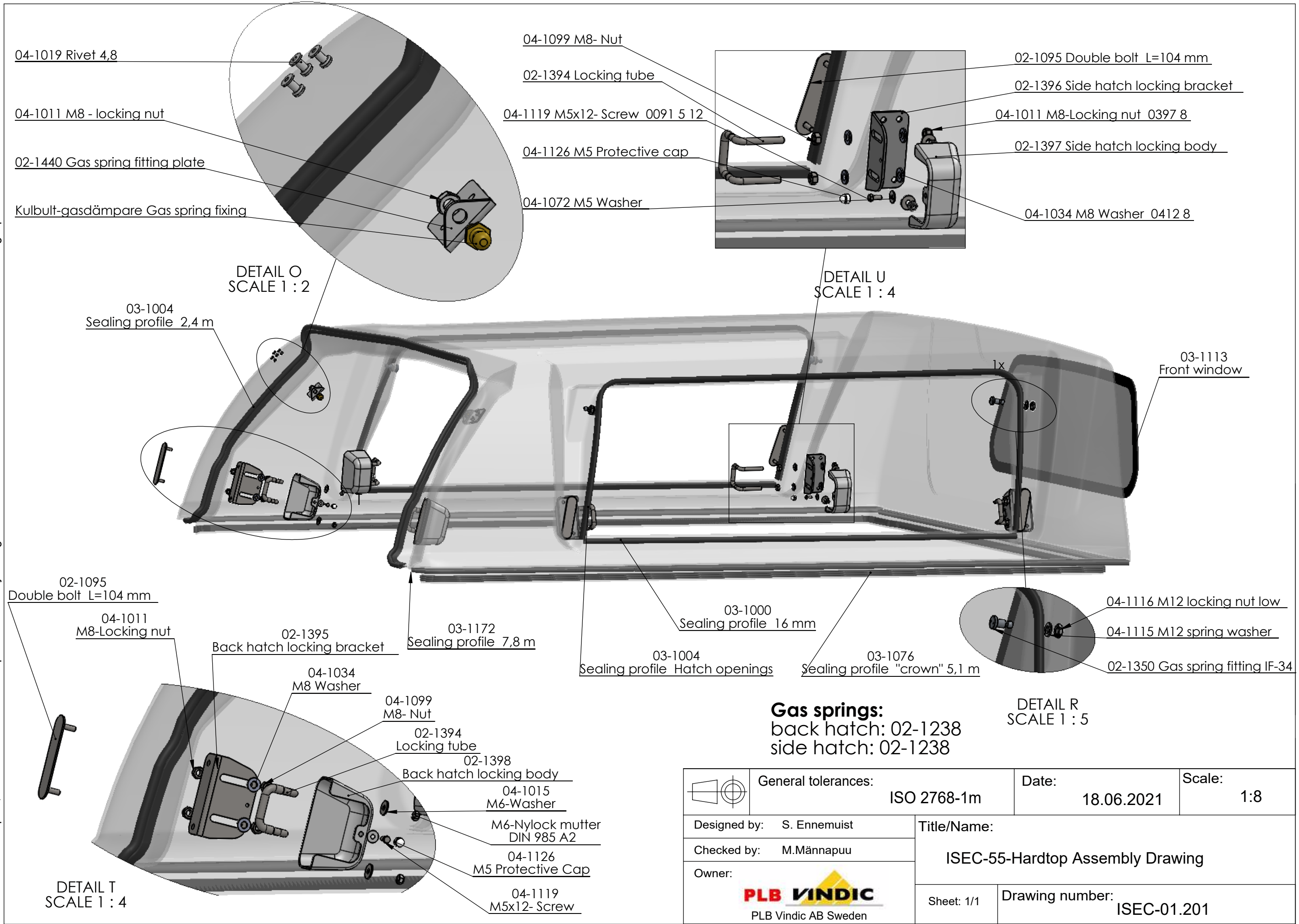
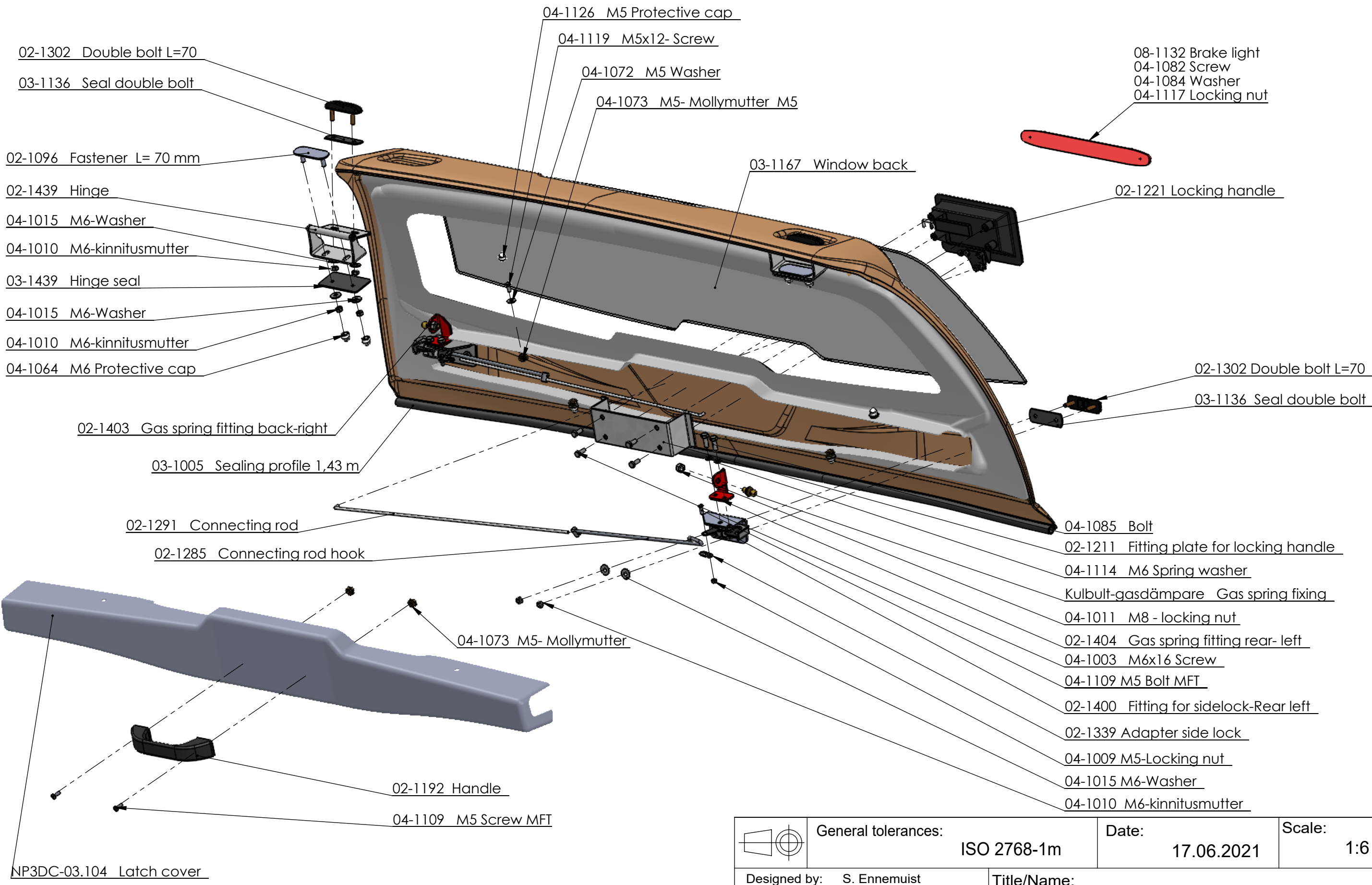


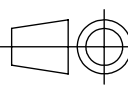

This drawing is the property of PLB Vindic AB. It is strictly confidential and must not be copied, traced or loaned without permission. Any infringement of these conditions will lead to the institution of legal procedures



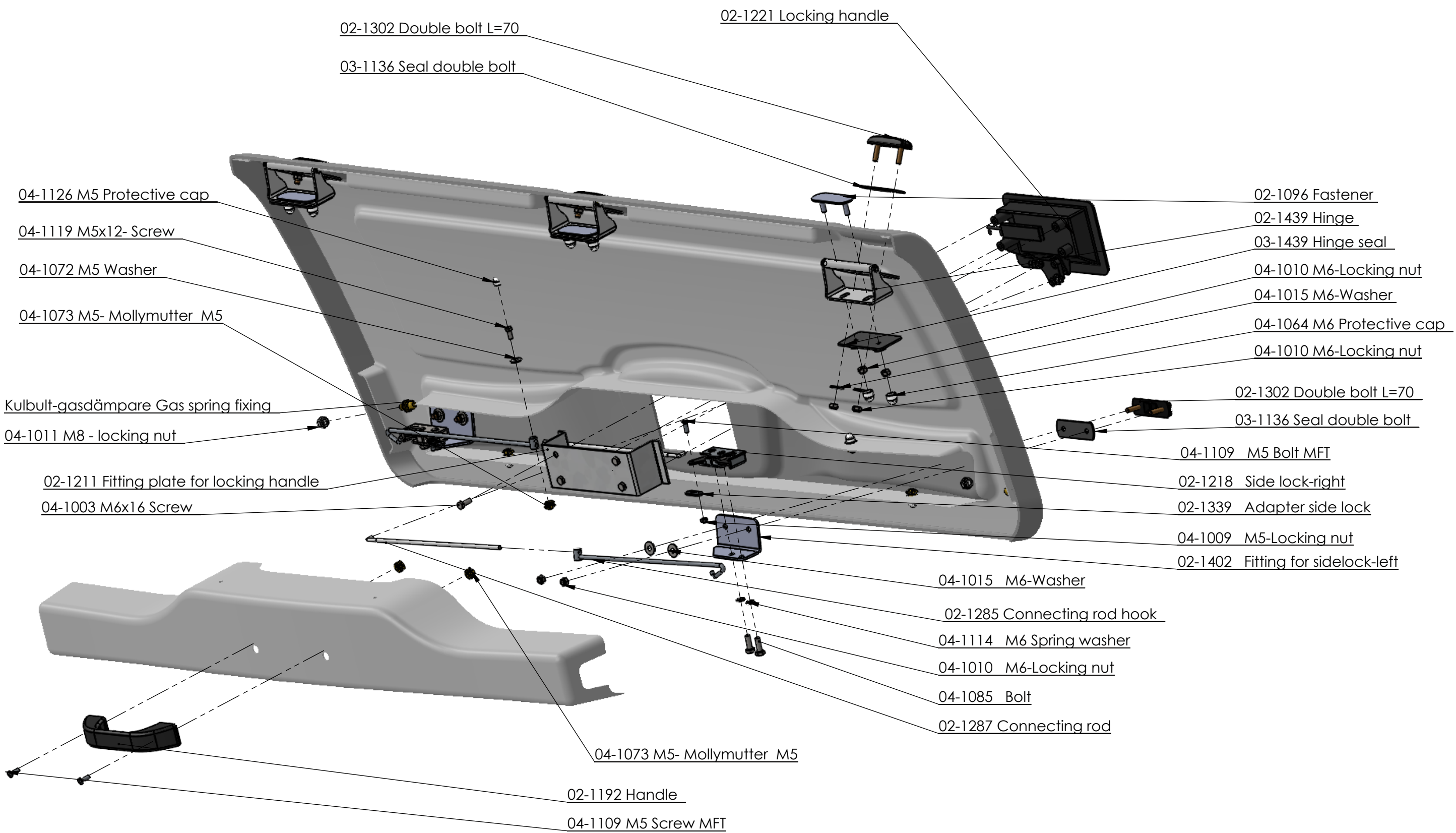
	General tolerances:	ISO 2768-1m	Date:	18.06.2021	Scale:	1:8
	Designed by:	S. Ennemuist	Title/Name:			
Checked by:	M.Männapuu	ISEC-55-Hardtop Assembly Drawing				
Owner:	 PLB Vindic AB Sweden	Sheet: 1/1	Drawing number:			ISEC-01.201

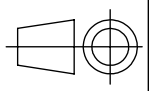
This drawing is the property of PLB Vindic AB. It is strictly confidential and must not be copied, traced or loaned without permission. Any infringement of these conditions will lead to the institution of legal procedures



	General tolerances:	ISO 2768-1m	Date:	17.06.2021	Scale:	1:6
	Designed by:	S. Ennemuist	Title/Name:			
Checked by:	M.Männäpää	ISDC-55, ISDC-1133, ISEC-55 and ISEC-1133 back hatch assembly drawing				
Owner:	 PLB Vindic AB Sweden		Sheet: 1/1	Drawing number:		ISDC-03.201

This drawing is the property of PLB Vindic AB. It is strictly confidential and must not be copied, traced or loaned without permission. Any infringement of these conditions will lead to the institution of legal procedures



	General tolerances: ISO 2768-1m	Date: 01.07.2021	Scale: 1:5
	Designed by: S. Ennemuist Checked by: M.Männapu Owner: <b>PLB VINDIC</b> PLB Vindic AB Sweden	Title/Name: <b>ISEC-55 side hatch assembly drawing</b>	