

# CENTRAL LOCK INSTALLATION USER`S MANUAL ISDC and ISEC.

Before starting the installation, read the entire Installation Instruction carefully!!!

Please be careful when connecting wires!!!

**1** Feed long cable from hardtop relay through car brake light (section 2), along the chassis towards to drivers front door area (sections 3-6) and to motor room (section 7) (Fig 1). Connect wires according wiring diagram and descriptions below. Follow car original wires and attach wire with clips.



Fig. 1

**2** Remove the left rear light and locate the brake light wire (red) and connect hardtop brake light wire (Grey) to it. (Fig. 2)

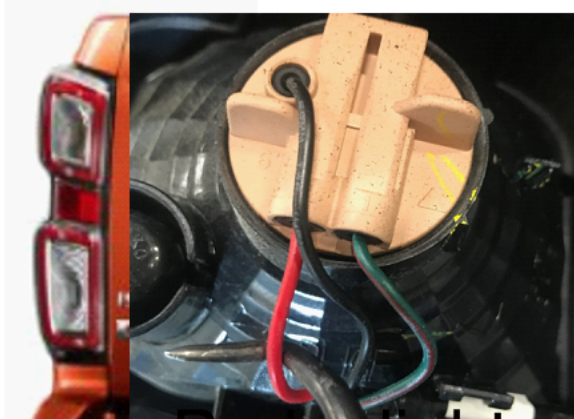


Fig. 2

**3** In the left footwell find contact/outlet/plug (Fig. 3) and feed the cables there.

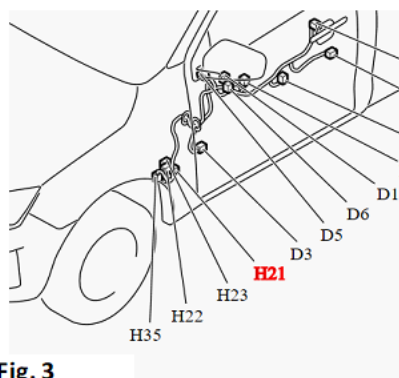


Fig. 3

**4** Locate the plug indicated in the drawing (Fig. 4) where the car central lock cables are.

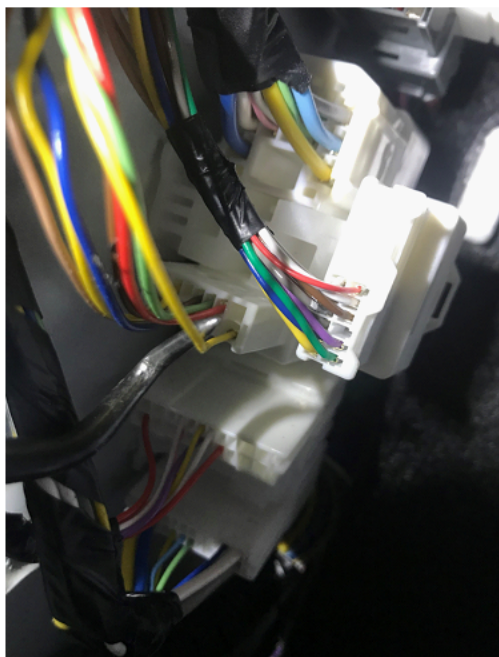


Fig. 4

- 5 Connect yellow cable on vehicle loom (Fig. 5) to hardtop white cable.

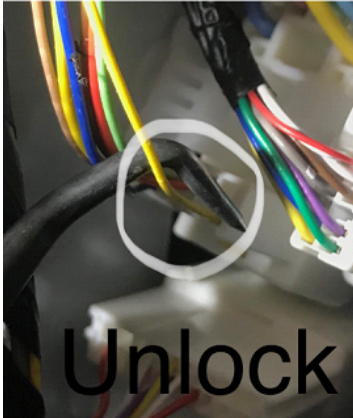


Fig. 5.

- 6 Connect brown cable on vehicle loom (Fig. 6) to hardtop brown cable.



Fig. 6

- 7 Locate grommets in the motor room and puncture a small hole to feed black and red wire to the motor room. Feed cables near to battery and connect black wire to (-) and red to (+). (Fig. 7)



Fig. 7

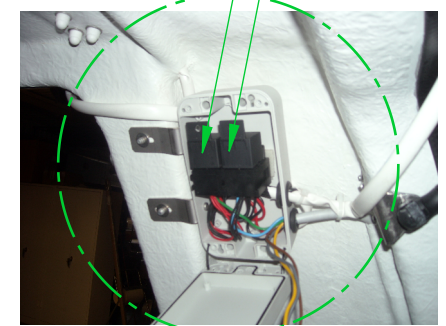
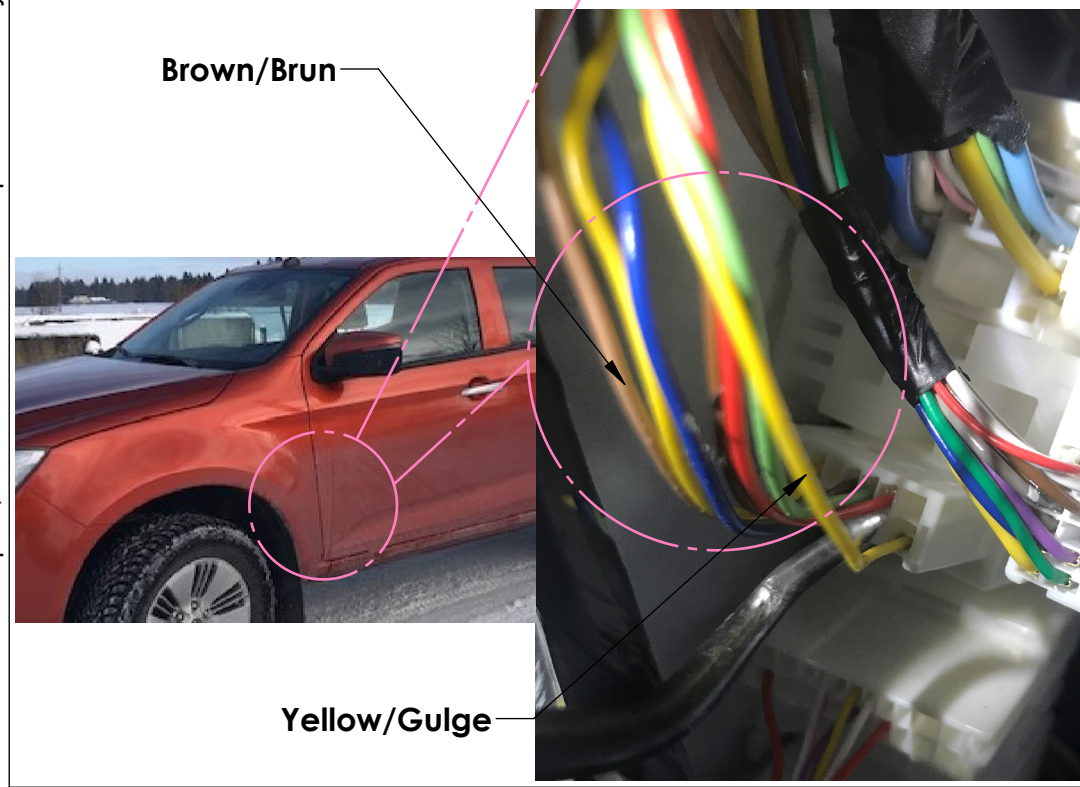
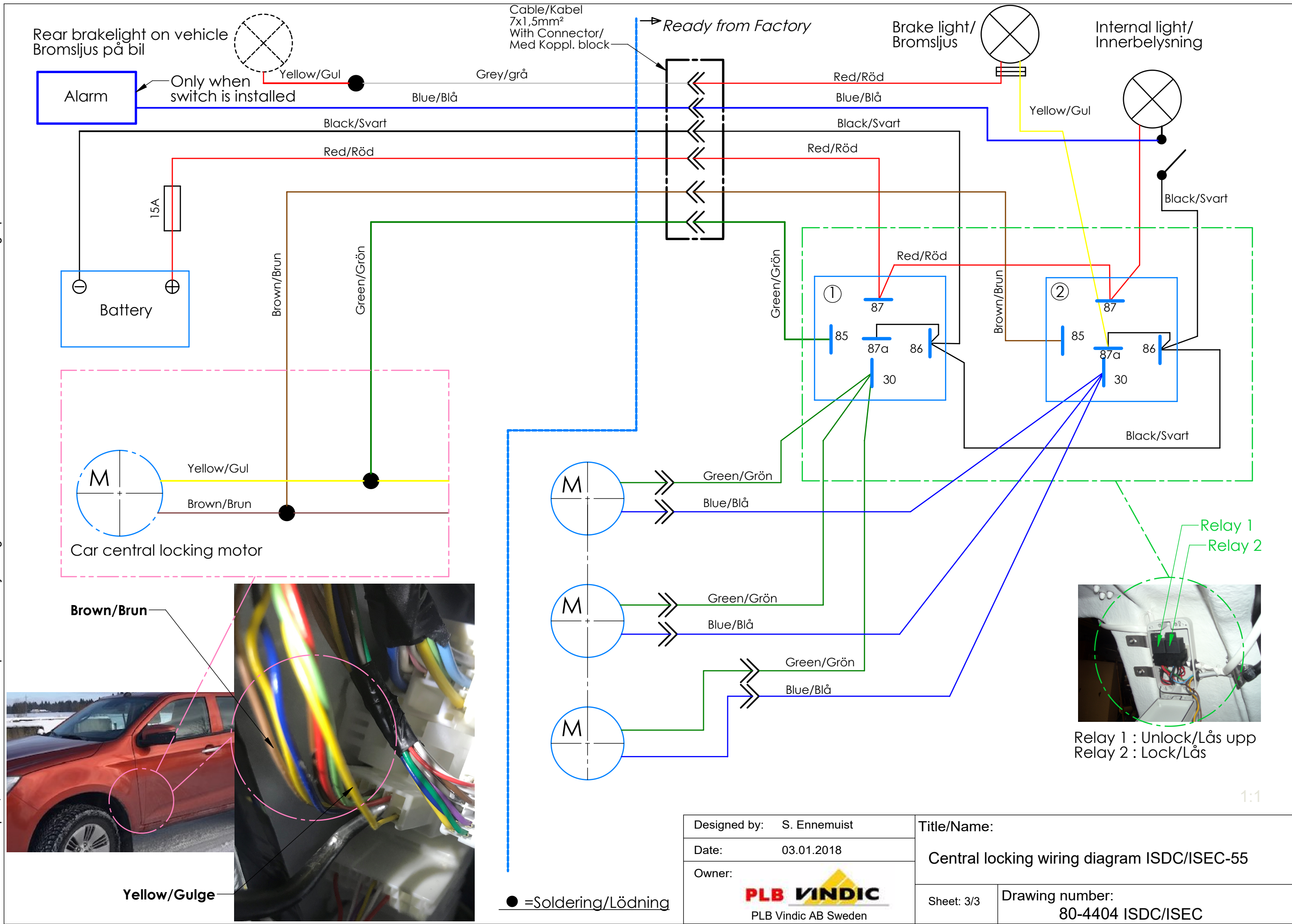
- 8 When connecting wires it is recommended to use electrical tester to get correct fitting. When testing cables you should get a 12v flash reading when pressing the central locking. Cover any connection with electrical tape and keep away cables from heat sources such as exhaust system.

**It is strongly recommended that installation is done by licenced Auto Electrician!!!**

**Any electrical faults due to improper installation will not be warranted by PLB Vindic AB.**



This drawing is the property of PLB Vindic AB. It is strictly confidential and must not be copied, traced or loaned without permission. Any infringement of these conditions will lead to the institution of legal procedures



Relay 1 : Unlock/Lås upp  
Relay 2 : Lock/Lås

1:1

Designed by: S. Ennemuist	Title/Name:	
Date: 03.01.2018	Central locking wiring diagram ISDC/ISEC-55	
Owner: <b>PLB VINDIC</b> PLB Vindic AB Sweden	Sheet: 3/3	Drawing number: 80-4404 ISDC/ISEC

● =Soldering/Lödning