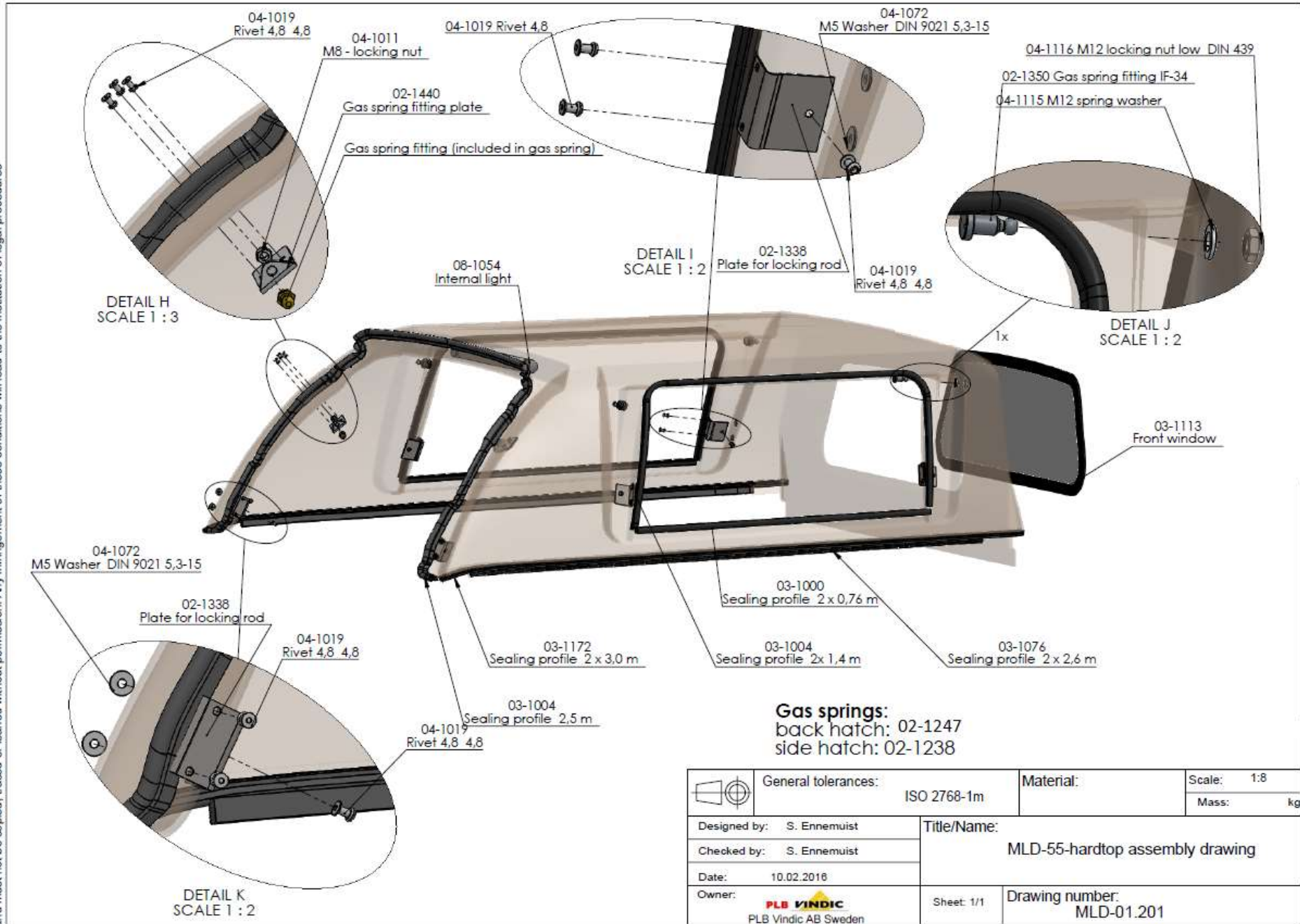
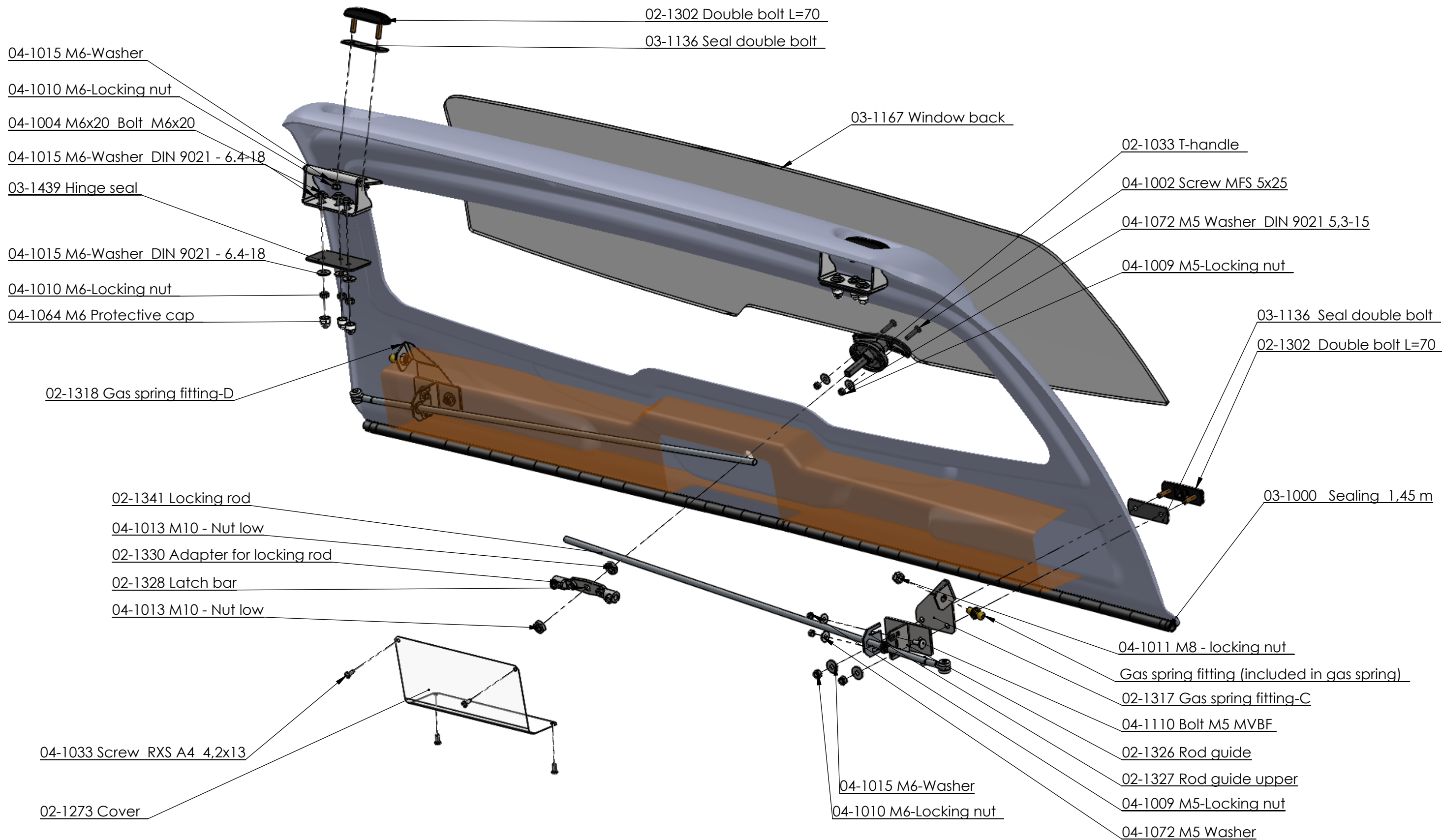


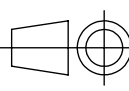

This drawing is the property of PLB Vindic AB. It is strictly confidential and must not be copied, traced or loaned without permission. Any infringement of these conditions will lead to the institution of legal procedures



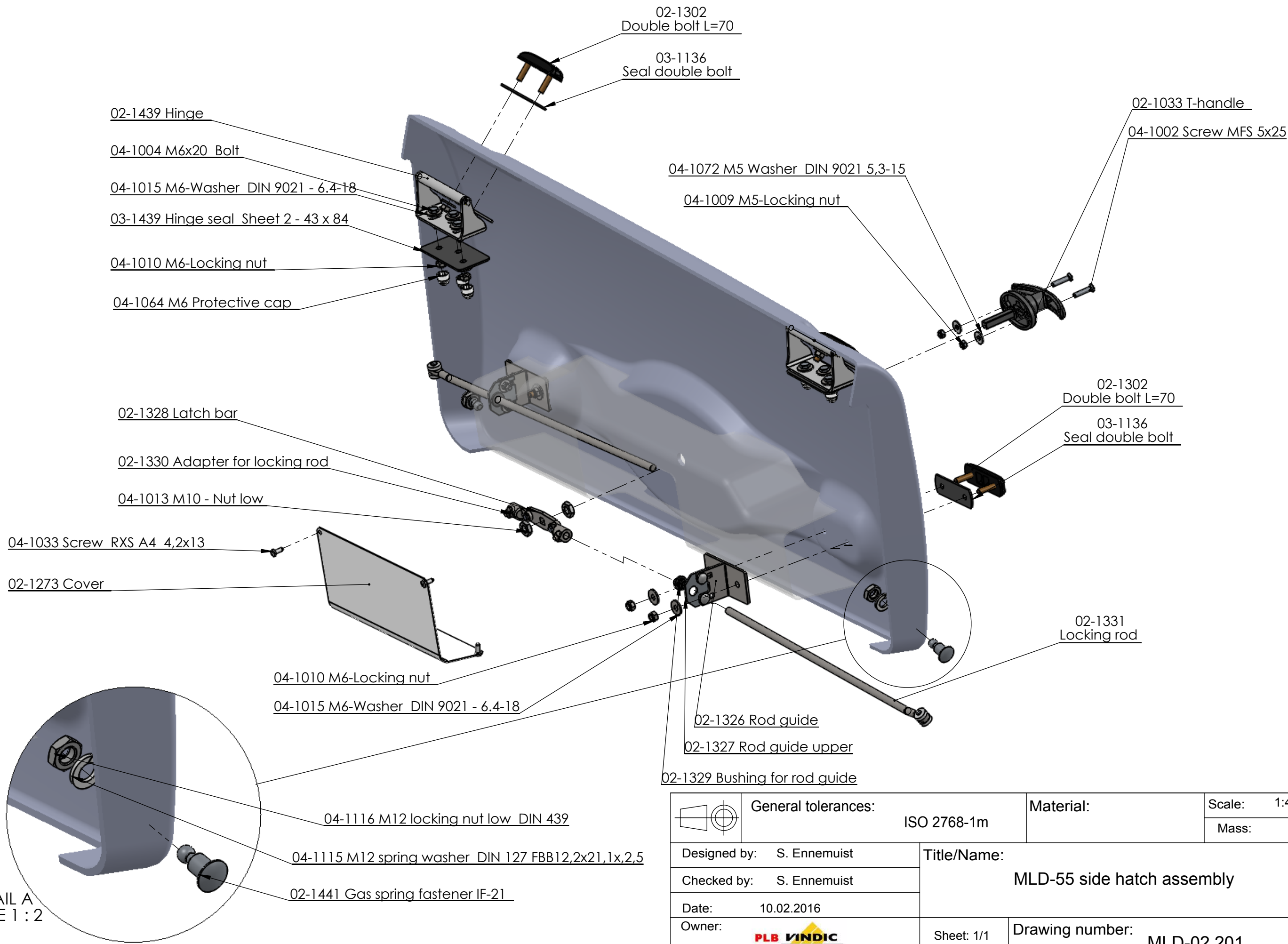
	General tolerances:	ISO 2768-1m	Material:	Scale: 1:8
				Mass: kg
Designed by:	S. Ennemuist		Title/Name: MLD-55-hardtop assembly drawing	
Checked by:	S. Ennemuist			
Date:	10.02.2018		Drawing number: MLD-01.201	
Owner:	 PLB Vindic AB Sweden			
Sheet: 1/1				

This drawing is the property of PLB Vindic AB. It is strictly confidential and must not be copied, traced or loaned without permission. Any infringement of these conditions will lead to the institution of legal procedures

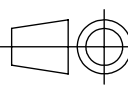



	General tolerances:	ISO 2768-1m	Date:	9.05.2016	Scale:	1:5
	Designed by:	S. Ennemuist	Title/Name:			
Checked by:	I. Karus	MLD-55-back hatch assembly drawing				
Owner:	 PLB Vindic AB Sweden	Sheet: 1/1	Drawing number:			MLD-03.201

This drawing is the property of PLB Vindic AB. It is strictly confidential and must not be copied, traced or loaned without permission. Any infringement of these conditions will lead to the institution of legal procedures



DETAIL A  
SCALE 1 : 2

	General tolerances:	ISO 2768-1m	Material:	Scale: 1:4
				Mass: kg
Designed by:	S. Ennemuist	Title/Name: MLD-55 side hatch assembly		
Checked by:	S. Ennemuist			
Date:	10.02.2016	Sheet: 1/1	Drawing number: MLD-02.201	
Owner:	 PLB Vindic AB Sweden			